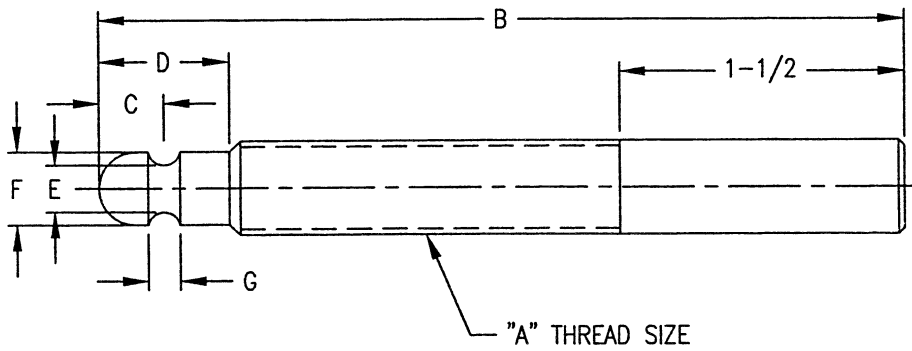


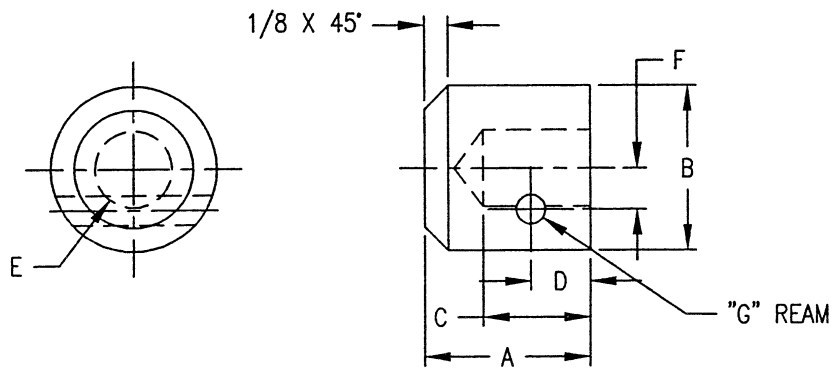
SCREWS

Ball End Screws



PX NO.	A	B	C	D	E	F	G
SBE-44	1/2-13	4-1/4	11/32	11/16	1/4	25/64	11/64
SBE-45	1/2-13	5-1/4	11/32	11/16	1/4	25/64	11/64
SBE-46	1/2-13	6-1/4	11/32	11/16	1/4	25/64	11/64
SBE-47	1/2-13	7-1/4	11/32	11/16	1/4	25/64	11/64
SBE-55	5/8-11	5	27/64	7/8	11/32	1/2	13/64
SBE-56	5/8-11	6	27/64	7/8	11/32	1/2	13/64
SBE-57	5/8-11	7	27/64	7/8	11/32	1/2	13/64
SBE-58	5/8-11	8	27/64	7/8	11/32	1/2	13/64
SBE-65	3/4-10	5-3/4	33/64	1	15/32	39/64	13/64
SBE-66	3/4-10	6-3/4	33/64	1	15/32	39/64	13/64
SBE-67	3/4-10	7-3/4	33/64	1	15/32	39/64	13/64
SBE-68	3/4-10	8-3/4	33/64	1	15/32	39/64	13/64
SBE-86	1-8	6	5/8	1-1/8	9/16	23/32	15/64
SBE-87	1-8	7	5/8	1-1/8	9/16	23/32	15/64
SBE-88	1-8	8	5/8	1-1/8	9/16	23/32	15/64
SBE-89	1-8	9	5/8	1-1/8	9/16	23/32	15/64

Ball Nose



PX NO.	USE WITH	A	B	C	D	E	F	G
BN-1	1/2-13	7/8	7/8	9/16	5/16	13/16	7/32	5/32
BN-2	5/8-11	1	1	21/32	11/32	33/64	9/32	3/16
BN-3	3/4-10	1-1/8	1-1/4	3/4	3/8	5/8	11/32	3/16
BN-4	1-8	1-1/4	1-1/2	7/8	13/32	47/64	13/32	7/32