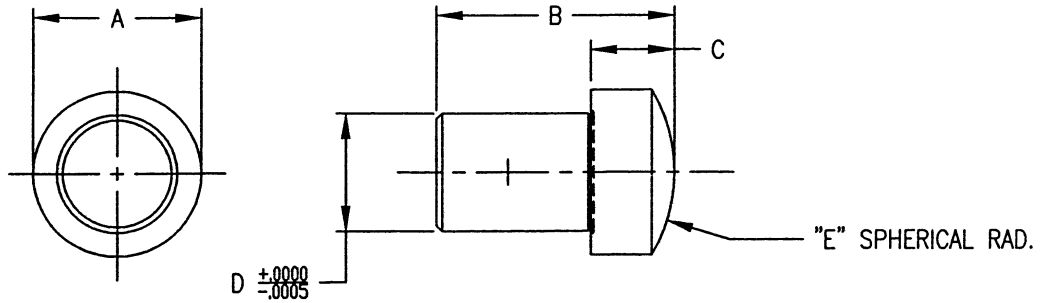


BUTTONS & EYE BOLTS

Spherical Rest Button

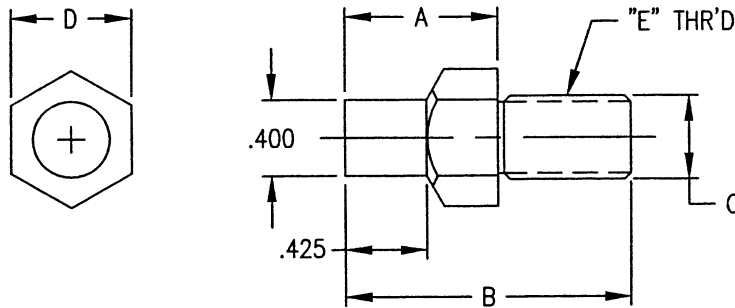
MAT'L: S-2 HD & GRN



| CAT. NO. | PX NO. | A | B | C | D | E |
|-------------|----------|-------|-------|-------|-------|-------|
| 4-121805400 | PX-96224 | 5/16 | 1/2 | 5/32 | .1875 | 5/16 |
| 4-121805401 | PX-96225 | 3/8 | 5/8 | 3/16 | .250 | 3/8 |
| 4-121805402 | PX-96226 | 1/2 | 3/4 | 1/4 | .375 | 1/2 |
| 4-121805403 | PX-96227 | 11/16 | 1 | 11/32 | .500 | 11/16 |
| 4-121805404 | PX-96228 | 7/8 | 1-1/4 | 7/16 | .625 | 7/8 |

Locating Foundry Spot Buttons

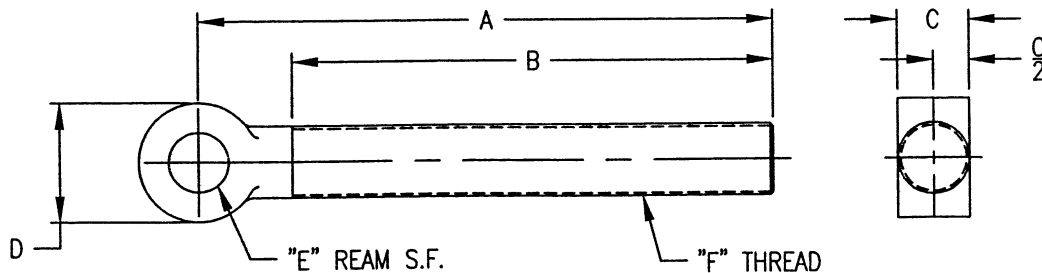
MAT'L: ALLOY STEEL-HEAT TREATED



| CAT. NO. | PX NO. | A | B | C | D | E |
|-------------|----------|-------|-------|------|------|---------|
| 4-560805564 | PX-96443 | 1.300 | 2.000 | .500 | .750 | .500-13 |
| 4-560805565 | PX-96444 | .800 | 1.500 | .375 | .625 | .375-16 |

Eye Bolts

MAT'L: ALLOY STEEL-HEAT TREATED



| CAT. NO. | PX NO. | A | B | C | D | E | F |
|-------------|----------|----|---|-----|-------|------|-------------|
| 4-088805115 | PX-96116 | 6 | 5 | 3/8 | 3/4 | 5/16 | 3/8-16 N.C. |
| 4-088805116 | PX-96117 | 6 | 5 | 1/2 | 7/8 | 3/8 | 1/2-13 N.C. |
| 4-088805118 | PX-96119 | 6 | 5 | 5/8 | 1 | 1/2 | 5/8-11 N.C. |
| 4-088805117 | PX-96118 | 12 | 6 | 5/8 | 1 | 1/2 | 5/8-11 N.C. |
| 4-088805120 | PX-96121 | 6 | 5 | 3/4 | 1-1/4 | 5/8 | 3/4-10 N.C. |
| 4-088805119 | PX-96120 | 12 | 6 | 3/4 | 1-1/4 | 5/8 | 3/4-10 N.C. |

PEERLESS TOOLING COMPONENTS
 PHONE (248) 585-9330 • FAX (248) 585-9332